



Nkosilathi Nyoni
074 826 0019
nkosilathi@framework.co.za

Contact Framework Property Services

011 481 7444

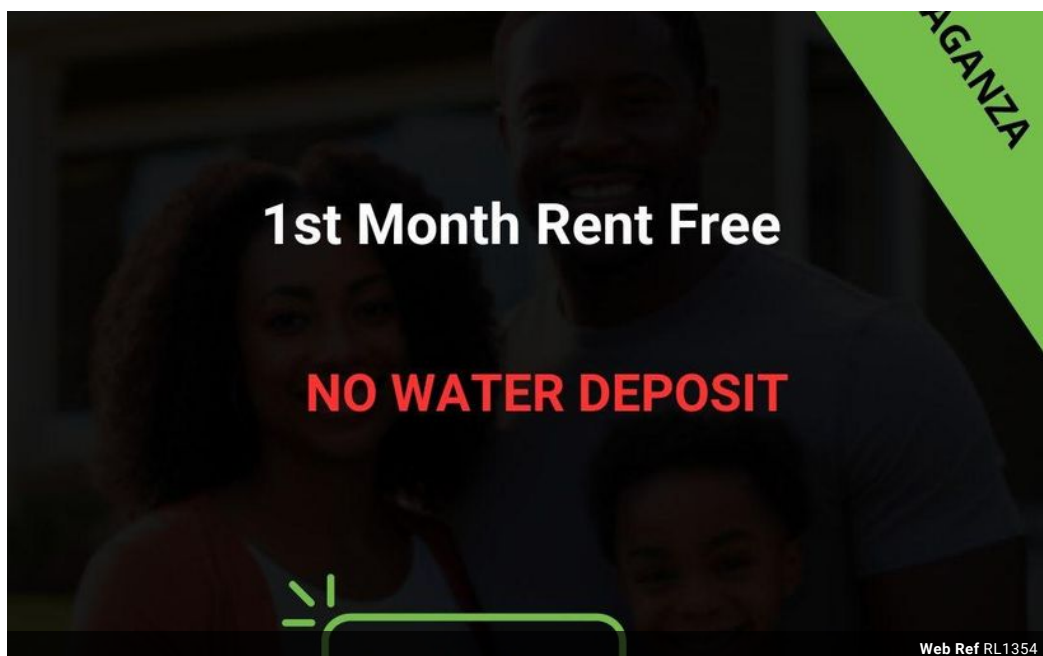
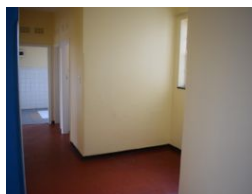
Framework House
4 Boundary Road
Rouxville
2192

TENANT QUERIES: MAINTENANCE
072 728 2165 (Whatsapp)

EMERGENCY HOLIDAY CONTACTS:
MAINTENANCE
(Residential Tenants Only)

Marc: 072 420 8496
Garth: 084 773 0766

PLEASE NOTE: The use of any Emergency Contractors are at your Own Risk and may be for your own account.

R5,800 pm

Lease Period 12 months
Annual Escalation -

Availability Immediately

Deposit -

 2  1

FIRST MONTH RENT FREE Just move in with R6,820 - all you need to get started!

FIRST MONTH RENT FREE

Just move in with R6,820 - all you need to get started!

Comfortable and spacious flat to rent in Berea at Montana Court, CNR Joel & Lilly Avenue. This lovely unit features a private flat, shared bathroom, and shared kitchen. Conveniently located close to surrounding shops and transport routes. The advertised rental includes monthly services.

Rental Breakdown:

Rent & Deposit: R5,800

Electricity: Prepaid

Total to move in: R6,820

Don't miss out on this great flat to rent in Berea, Johannesburg!
Contact **FRAMEWORK** for your viewing today!

Features

Interior

Bedrooms	2
Bathrooms	1
Kitchens	1
Recep. Rooms	1
Furnished	No

Exterior

Pool	No
------	----

