



**Martha Matlala**  
065 302 5061  
martha@framework.co.za

Contact Framework Property Services

011 4817444

Framework House  
4 Boundary Road  
Rouxville  
2192

TENANT QUERIES: MAINTENANCE  
072 728 2165 (Whatsapp)

EMERGENCY HOLIDAY CONTACTS:  
MAINTENANCE  
(Residential Tenants Only)

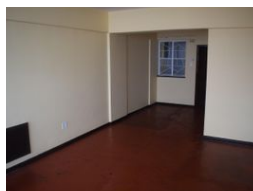
Marc: 072 420 8496  
Garth: 084 773 0766

PLEASE NOTE: The use of any Emergency Contractors are at your Own Risk and may be for your own account.

## 2 Bedroom Flat To Let in Berea



Web Ref RL1774



R5,990 pm

**Lease Period** 12 months  
**Annual Escalation** -

**Availability** Immediately

**Deposit** -

 2  1

### Spacious 2-Bedroom Flat to Rent in Berea - Golden Acres!

Spacious 2-Bedroom Flat to Rent in Berea - Golden Acres!

This lovely spacious 2-bedroom flat is available for rent at Golden Acres, located on the corner of Joel & Fife Street in Berea. It comes with 1 bathroom, a lounge, and a kitchen. The building offers Wi-Fi for R175 p/m, a lift, and an inverter for common areas during load shedding. This spot is conveniently located, being close to surrounding shops and transport routes. Don't miss out on this lovely 2-bedroom flat to rent in Berea, Johannesburg.

Your monthly rent does NOT include services:

-The advertised rental does not include monthly services.

Important Financial Information:

-Monthly Rent: R5,990.00

-Rent Deposit: R5,990.00

-First Month's Rent & Deposit Combined: R11,980.00

-Admin Fee (once-off): R1,000 (R700 Lease Fee + R300 TPN fee)

-Water Provisional (Deposit):...

### Features

#### Interior

|              |    |
|--------------|----|
| Bedrooms     | 2  |
| Bathrooms    | 1  |
| Kitchens     | 1  |
| Recep. Rooms | 1  |
| Furnished    | No |

#### Exterior

|          |       |
|----------|-------|
| Security | No    |
| Pool     | No    |
| Views    | False |

#### Sizes

|            |      |
|------------|------|
| Floor Size | 96m² |
|------------|------|

