



Gloria Sebayo
0693399515
gloria@framework.co.za

Contact Framework Property Services

011 4817444

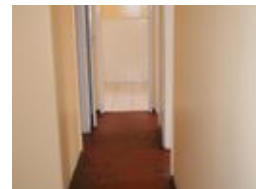
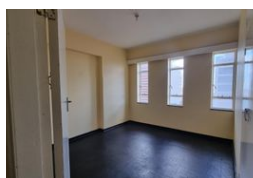
Framework House
4 Boundary Road
Rouxville
2192

TENANT QUIRIES: MAINTENANCE
072 728 2165 (Whatsapp)

EMERGENCY HOLIDAY CONTACTS:
MAINTENANCE
(Residential Tenants Only)

Marc: 072 420 8496
Garth: 084 773 0766

PLEASE NOTE: The use of any Emergency Contractors are at your Own Risk and may be for your own account.



R2,300 pm

Lease Period 12 months
Annual Escalation -

Availability Immediately

Deposit -



FIRST MONTH RENT FREE Just move in with R3,320 - all you need to get started!

JULY SPECIAL! Comfortable & Spacious Flat to Rent in Berea - Montana Court!

This comfortable and spacious flat is available for rent in Berea at Montana Court, located on the corner of Joel & Lilly Avenue. This lovely unit features a private flat, shared bathroom, and shared kitchen. Conveniently located close to surrounding shops and transport routes. Don't miss out on this great flat to rent in Berea, Johannesburg!

Unlock Unbeatable Savings with Our Exclusive July Special:

- First Month Rent Free! (T's & C's Apply)
- No Admin Fee
- No Water Deposit

Your monthly rent includes these essential services:
Sewer

Refuse

Basic Facility

Important Financial Information:

Features

Interior
Furnished

No

Exterior
Security
Pool
Views

No
No
False

Sizes
Floor Size

22m²

