



**Gloria Sebayo**  
0693399515  
gloria@framework.co.za

Contact Framework Property Services

011 4817444

Framework House  
4 Boundary Road  
Rouxville  
2192

TENANT QUERIES: MAINTENANCE  
072 728 2165 (Whatsapp)

EMERGENCY HOLIDAY CONTACTS:  
MAINTENANCE  
(Residential Tenants Only)

Marc: 072 420 8496  
Garth: 084 773 0766

PLEASE NOTE: The use of any Emergency Contractors are at your Own Risk and may be for your own account.

NEW


**Framework**  
PROPERTY SERVICES

**MONTANA COURT**  
CNR JOEL AND LILLY, BEREA

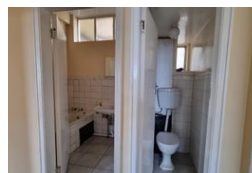
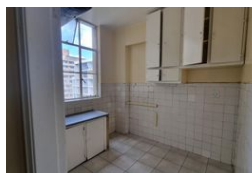
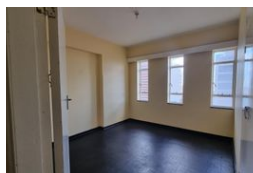


*Framework can't fix the world but we can fix 1 building at a time*




[letting@framework.co.za](mailto:letting@framework.co.za)





R2,300 pm

**Lease Period** 12 months  
**Annual Escalation** -

**Availability** Immediately

**Deposit** -

 1  1

### FIRST MONTH'S RENT FREE!

Spacious Room to Rent in Berea - Montana Court, CNR Joel & Fife Street

This spacious room includes access to shared bathroom and kitchen facilities. WiFi is available for R175 p/m, and the building is conveniently located near shops and transport routes. The advertised rental does not include monthly services.

Deposit: R2,300 + R450 Water Deposit

Admin Fee (once-off): R1,000 (R700 Lease Fee + R300 TPN Fee)

Electricity: Prepaid

Water: R110 per adult and R40 per child

Average Monthly Services:

- Basic Facility: R20

- WI-FI: R175

- Sewer: INCLUDED

- Refuse: INCLUDED

Don't miss out on this neat and well-located room to rent in Berea, Johannesburg.

Contact FRAMEWORK for your viewing today!

### Features

#### Interior

Bedrooms	1
Bathrooms	1
Kitchens	1
Recep. Rooms	2
Furnished	No

#### Exterior

Security	No
Pool	No
Views	False

