

**Framework Letting**

0714900510

letting.framework.property@gmail.com



Contact Framework Property Services

011 4817444

Framework House  
4 Boundary Road  
Rouxville  
2192

TENANT QUERIES: MAINTENANCE  
072 728 2165 (Whatsapp)

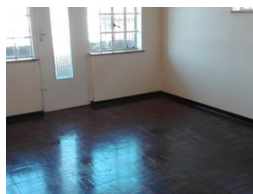
EMERGENCY HOLIDAY CONTACTS:  
MAINTENANCE  
(Residential Tenants Only)

Marc: 072 420 8496  
Garth: 084 773 0766

PLEASE NOTE: The use of any Emergency Contractors are at your Own Risk and may be for your own account.



Web Ref RL1283



R5,400 pm

Lease Period 12 months  
Annual Escalation -

Availability Immediately Deposit -



## Spacious One-Bedroom Flat with 'Old Building' Charm!

Spacious One-Bedroom Flat with 'Old Building' Charm!

This spacious one-bedroom flat has that 'old building' feel, with a large lounge and kitchen area boasting ample cupboard space. The bedroom is large with built-in cupboards (BIC) and a separate bathroom featuring a toilet, basin, and bath. Enjoy stunning parquet flooring throughout the unit.

### Important Financial Information:

- Monthly Rent: R5,400
- Rent Deposit: R5,400
- Admin Fee (once-off): R1,000
- Water Provisional (Deposit): R450

Total Amount Payable on Move-in: R12,250 (This covers your Rent Deposit, Admin Fee, and Water Provisional Deposit.)

### Additional Monthly Costs:

- Sewer: R418.65
- Refuse: R198.91
- Basic Facility: R20

## Features

### Interior

Bedrooms	1
Bathrooms	1
Kitchens	1
Recep. Rooms	1
Furnished	No

### Exterior

Security	No
Pool	No
Views	False

### Sizes

Floor Size	89m <sup>2</sup>
------------	------------------

