



Martha Matlala
065 302 5061
martha@framework.co.za

Contact Framework Property Services

011 4817444

Framework House
4 Boundary Road
Rouxville
2192

TENANT QUERIES: MAINTENANCE
072 728 2165 (Whatsapp)

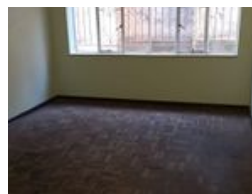
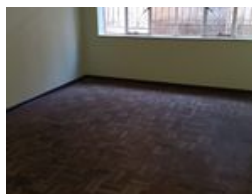
EMERGENCY HOLIDAY CONTACTS:
MAINTENANCE
(Residential Tenants Only)

Marc: 072 420 8496
Garth: 084 773 0766

PLEASE NOTE: The use of any Emergency Contractors are at your Own Risk and may be for your own account.



Web Ref RL1645




R4,750 pm

Lease Period 12 months
Annual Escalation -

Availability Immediately

Deposit -

 1  1

Spacious 1 Bedroom Flat in Hillbrow - Goldreich Court

Spacious 1 Bedroom Flat in Hillbrow - Goldreich Court

Stop scrolling! This is the space you've been looking for - a big 1 bedroom flat with a lounge, kitchen, and bathroom in the sought-after Goldreich Court. Safe. Secure. Central.

Water Included

Prepaid Electricity

WiFi Available at R175/month

Only R20 Facility Fee

Once-off Admin Fee: R1000

Clean, spacious, and affordable city living - don't miss out!

Limited units available Viewing essential

Features

Interior

Bedrooms	1
Bathrooms	1
Kitchens	1
Recep. Rooms	1
Furnished	No

Exterior

Pool	No
------	----

