



Martha Matlala
065 302 5061
martha@framework.co.za

Contact Framework Property Services

011 4817444

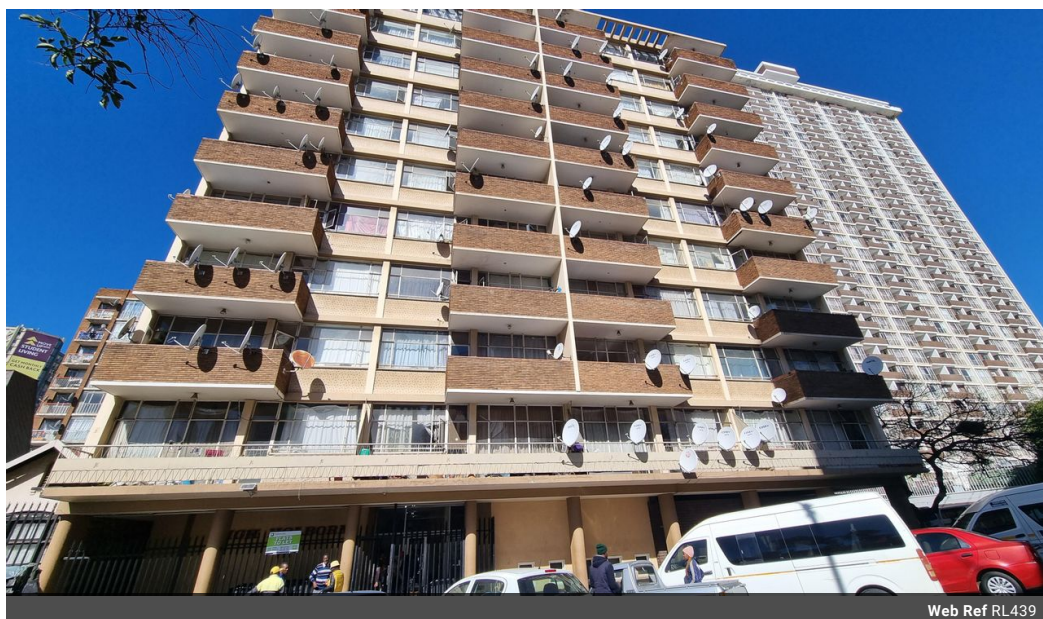
Framework House
4 Boundary Road
Rouxville
2192

TENANT QUERIES: MAINTENANCE
072 728 2165 (Whatsapp)

EMERGENCY HOLIDAY CONTACTS:
MAINTENANCE
(Residential Tenants Only)

Marc: 072 420 8496
Garth: 084 773 0766

PLEASE NOTE: The use of any Emergency Contractors are at your Own Risk and may be for your own account.



Web Ref RL439



R4,300 pm

Lease Period 12 months
Annual Escalation -

Availability Immediately Deposit -

🛏 1 🚿 1

SPACIOUS 2-BEDROOM APARTMENT TO RENT - HIGH HOLBORN, HILLBROW

This neat and spacious 1-bedroom apartment offers comfortable living in a well-maintained building. Conveniently located near shops and transport routes, it includes WiFi at only R175/month and easy access to key city amenities.

Features:
-1 Bedroom
-1 Bathroom
-Lounge
-Kitchen
-Wi-Fi - Only R175/month
-Close to shops and transport routes

Rental Price: R4,300 per month

Rental Details:
-Deposit: R5,000 + R450 Water Deposit
-Admin Fee (once-off): R1,200

Average Monthly Services

Features

Interior

| | |
|--------------|----|
| Bedrooms | 1 |
| Bathrooms | 1 |
| Kitchens | 1 |
| Recep. Rooms | 1 |
| Furnished | No |

Exterior

| | |
|----------|-------|
| Security | No |
| Pool | No |
| Views | False |

