



**Framework Letting**  
0714900510  
letting.framework.property@gmail.com

Contact Framework Property Services

011 4817444

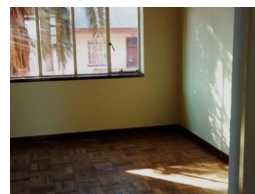
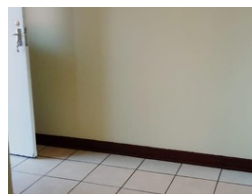
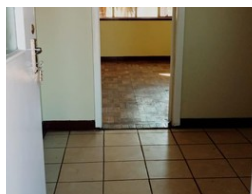
Framework House  
4 Boundary Road  
Rouxville  
2192

TENANT QUERIES: MAINTENANCE  
072 728 2165 (Whatsapp)

EMERGENCY HOLIDAY CONTACTS:  
MAINTENANCE  
(Residential Tenants Only)

Marc: 072 420 8496  
Garth: 084 773 0766

PLEASE NOTE: The use of any Emergency Contractors are at your Own Risk and may be for your own account.



R4,000 pm

**Lease Period** 12 months  
**Annual Escalation** -

**Availability** Immediately **Deposit** -

 1  1

### 1 BEDROOM UNIT IN JEPPESTOWN!!

Don't miss out on this gorgeous 1 bedroom unit available for rental in Grace Court.

The bedrooms are bright and cosy, perfect for keeping warm on cold winter days, and the spacious lounge and kitchen make this the perfect unit for you!!

Call the office today to arrange for a viewing and ensure that you do not miss out on this amazing deal!!

### Features

#### Interior

Bedrooms	1
Bathrooms	1
Kitchens	1
Furnished	No

#### Exterior

Security	No
Pool	No
Views	False

#### Sizes

Floor Size	48m <sup>2</sup>
------------	------------------

