



Tumelo Matthews
079 050 1866
tumi@framework.co.za

Contact Framework Property Services

011 4817444

Framework House
4 Boundary Road
Rouxville
2192

TENANT QUERIES: MAINTENANCE
072 728 2165 (Whatsapp)

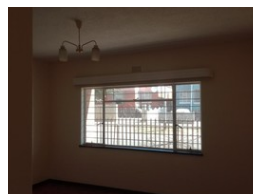
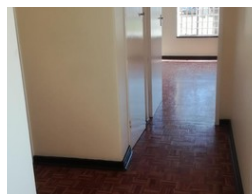
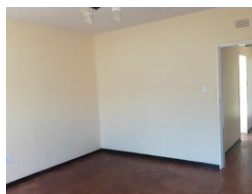
EMERGENCY HOLIDAY CONTACTS:
MAINTENANCE
(Residential Tenants Only)

Marc: 072 420 8496
Garth: 084 773 0766

PLEASE NOTE: The use of any Emergency Contractors are at your Own Risk and may be for your own account.



Web Ref RL546




R4,995 pm

Lease Period 12 months
Annual Escalation -

Availability Immediately

Deposit -

 2  1

Spacious 2 Bedroom Flat to Rent in ST CHRISTOPHER!

Spacious 2 Bedroom Flat to Rent in ST CHRISTOPHER!

This charming 2-bedroom unit is available for rent at 8 Garden Street. This inviting unit features two bedrooms, making it perfect for individuals or small families. It is conveniently located, being close to surrounding shops and transport routes. Don't miss out on this great 2 bedroom flat to rent!

Important Financial Information:

- Monthly Rent: R4,995.00
- Deposit: R4,995.00
- First Month's Rent & Deposit Combined: R9,990.00
- Admin Fee (once-off): R1,000.00 (TPN/ITC R700.00 + Lease Fees R300.00)
- Water Provisional: NONE IT'S FIXED UPFRONT

Total Amount Payable on Move-in: R10,990.00 (This covers your First Month's Rent, Deposit, and Admin Fee.)

Additional Monthly Costs:

- Water: R375.00
- Sewer: R427.00 n/m

Features

Interior

Bedrooms	2
Bathrooms	1
Kitchens	1
Recep. Rooms	1
Furnished	No

Exterior

Security	No
Pool	No
Views	False

