

Framework Letting

0714900510

letting.framework.property@gmail.com



Contact Framework Property
Services

011 4817444

Framework House
4 Boundary Road
Rouxville
2192

TENANT QUERIES: MAINTENANCE
072 728 2165 (Whatsapp)

EMERGENCY HOLIDAY CONTACTS:
MAINTENANCE
(Residential Tenants Only)

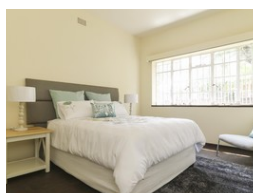
Marc: 072 420 8496
Garth: 084 773 0766

PLEASE NOTE: The use of any Emergency
Contractors are at your Own Risk and may
be for your own account.

1 Bedroom Flat To Let in Yeoville



Web Ref RL380



R4,000 pm

Lease Period 12 months
Annual Escalation -

Availability Immediately

Deposit -



1 Bedroom Flat To Let in Yeoville

REDUCED RENTAL FROM R4000 TO R3800

1 Bedroom to rent in Minata Court
Lovely spacious 2 bedroom unit to rent in Minata Court. Each bedroom had BIC and it quite spacious.
Lovely kitchen with ample cupboard space.
Lounge has doors opening onto a large balcony.

Features

Interior

| | |
|--------------|----|
| Bedrooms | 1 |
| Bathrooms | 1 |
| Kitchens | 1 |
| Recep. Rooms | 1 |
| Furnished | No |

Exterior

| | |
|----------|-------|
| Security | No |
| Pool | No |
| Views | False |

Sizes

| | |
|------------|------------------|
| Floor Size | 56m ² |
|------------|------------------|

