



Martha Matlala
065 302 5061
martha@framework.co.za



Framework Letting
0714900510

letting.framework.property@gmail.com

Contact **Framework Property Services**

011 4817444

Framework House
4 Boundary Road
Rouxville
2192

TENANT QUIRIES: MAINTENANCE
072 728 2165 (Whatsapp)

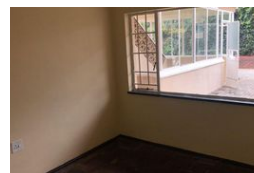
EMERGENCY HOLIDAY CONTACTS:
MAINTENANCE
(Residential Tenants Only)

Marc: 072 420 8496
Garth: 084 773 0766

PLEASE NOTE: The use of any Emergency
Contractors are at your Own Risk and may
be for your own account.



Web Ref RL788



R8,050 pm

Lease Period 12 months
Annual Escalation -

Availability Immediately

Deposit -

 2  1

Spacious 2 Bedroom Flat to Rent in Blairgowrie - Marga Court!

Spacious 2 Bedroom Flat to Rent in Blairgowrie - Marga Court!

This lovely spacious 2-bedroom flat is available for rent at Marga Court, 43 Susman Drive, Blairgowrie. It comes with 1 bathroom, a large lounge, a kitchen, and built-in cupboards. This spot is conveniently located, being close to surrounding shops and transport routes. Don't miss out on this lovely 2 bedroom flat to rent in Blairgowrie, Johannesburg.

Your monthly rent does NOT include services:
-The advertised rental does not include monthly services.

Important Financial Information:
-Monthly Rent: R8,050
-Rent Deposit: R8,050
-First Month's Rent & Deposit Combined: R16,100
-Admin Fee (once-off): R1,000
-Water Provisional (Deposit): R450
-Security Deposit: R250

Total Amount Payable on Move-in: R17 850 (This covers your First Month's Rent, Rent Deposit, Admin

Features

Interior

Bedrooms	2
Bathrooms	1
Kitchens	1
Recep. Rooms	1
Furnished	No

Exterior

Security	No
Pool	No
Views	False

